

News



e=CS²
Newsletter
2013
Volume-VIII

Wintrip, India's first UL certified MCB

C&S Electric has received UL certification for its Wintrip MCBs. C&S Electric is the first Indian manufacturing company to receive UL certification (as per UL1077CCN:QVNU2) for Modular Circuit Breakers (MCBs). UL (Underwriters Laboratories) is a safety consulting and certification company headquartered in Northbrook, Illinois. The UL Certification is among the most trusted certifications in North America. It confirms the product compliance to rigorous safety standards for use in electrical installations as per North American Standards.

In addition, C&S Electric has also received CUL certification for the same range of products for Canada market. Products with the CUL mark indicate that they comply with Canadian safety standards which are basically same to reference standards of United States UL.

The certification has been awarded for all SP/SPN/DP/TP/TPN & FP for B & C curve MCBs.

Wintrip MCBs are known for its quality and reliable performance and sold across India. C&S Wintrip MCBs are recognized as one of the best brands in India and are sold through more than 2750 retail counters. In addition, Wintrip MCBs are exported to more than 73 countries. The UL and CUL certification will increase opportunities for Wintrip MCBs in US and Canada.



We touch your electricity everyday!

C&S Electric Featuring in INC Magazine

INC., a magazine for growing companies, carried story on journey of C&S Electric in last 10 years. The article gives deep insights about the company and about its deeper values that it holds very closely, primarily those of trust, integrity, empowerment, ownership, embracing change and "thinking outside the box". The story carries the process of transformation of a family run 200 crore business into a 1100 crore modern business empire.

It details out, how several individual entities in 2008, were merged to create a strong single cohesive identity, which prompted in bonding and sharing among employees and creating a strong brand image. The story elaborates how changes are made in company without any conflict and chaos. It details out the process and efforts made towards corporate governance by the company.

The story elaborates how the company's strong presence in power sector has been extended to other segments as well - like in Infrastructure & Retail. It also speaks about the process and objectives behind spreading wings beyond India-setting up plant in China & acquisition of Etacom in Belgium.

This is a saga of the achievements and hard work, without which the growth, company has enjoyed, would have not been possible.



The C-Force
C&S Directors
Anuj Khanna
Rishi Khanna
Aditya Khanna

OOH Campaign

This year C&S Electric has launched a high scale brand campaign on OOH platform in Delhi with an aim of creating brand awareness in the national capital. The brand building & awareness campaign has a set of different creatives based on trust, safety, reliability & delighting customer messages. The messaging used in the campaign is very thought stimulating & directed towards driving home the point of delighting customers.

These creatives are installed in the upmarket areas of Delhi such as South Delhi, Central Delhi & North Delhi. The campaign has been extended to other major cities as well, including Chennai and Ahmedabd.



Hoarding at Mathura Road, Delhi



Hoarding at Karkardooma Road, Delhi



BQS at Capt. Gaur Marg, Delhi



Hoarding at Ahmedabad Express Highway, Ahmedabad



Hoarding at Chennai High Court Road, Chennai



Hoarding at Kohat Enclave, Delhi

Landmark Orders

C&S wins prestigious MAFI project

C&S Electric has won a prestigious order from government of India for modernization of the IAF airbases - **Modernization of Airfield Infrastructure (MAFI)**. MAFI will enable next-generation aircrafts to operate from these modernized airbases. In the first phase, 30 IAF airbases will be modernised under MAFI and all of them will be powered



Bhatinda Airfield

by C&S. We are executing the power generation part in this prestigious project. The scope includes supply, installation, testing, commissioning & synchronization of 750 KVA DG sets of C&S Himoinso make, supply of LT distribution boards & AMF panel and underground diesel storage tank of capacity 15000 ltrs. for the generator set. The work for the pilot project at Bhatinda airbase in the state of Punjab has already been successfully completed.

Etacom Belgium contributing to Green Ship

Etacom has won a prestigious project from ABB for supplying Betaobar range of Busbars at Kleven. The scope of orders includes the installation of LV Betobar-r elements on a shipyard in Kleven, Norway. This project is unique as it will be the first time that DC will be installed on a ship, instead of AC, thus creating less emission.

C&S Bustrunking powering hydro power plant -Teesta Urja, Sikkim

C&S Bustrunking division has received an order for hydro power plant from Teesta Urja Limited in Sikkim. This 1200 MW project is a run of the river scheme in the North Sikkim district and utilizes the available gross head of 800 meters.

BBT division also received its first ever order from DRDO for lighting trunking. The supply shall be used by DRDO in a tunnel project in Ladakh. This project is very strategic in nature as it shall facilitate connectivity of Ladakh with the nation throughout the year, which otherwise remains severed from the country for at least six wintery months.

In addition to this, C&S Electric has also received its first order from Reliance Foundation for sandwich bustrunking for H N Hospital, Mumbai. Reliance Foundation is expanding its heritage hospital, Dr. H N Hospital and Research Centre by building a 19 storey, 800,000 sq. ft. world class health facility.

C&S PSS at Rajasthan Housing Board

C&S Electric has won supply order of Package Substation from Rajasthan housing board. In addition, C&S Package Substation continues to be first choice of power utility companies in Mumbai.

C&S Efacec helps BSES Yamuna Power in city power distribution

BSES Yamuna Power Ltd approached C&S Efacec for restoration of 11kV Switchgear, damaged due to a fire at 33/11kV Grid Substation at Kondli, leaving 1 No. 20 MVA transformer out of service. C&S Efacec took up the challenge and supplied a switchboard consisting of one incomer, five outgoing and one buscoupler panel in mere three days time and helped BSES engineers in installing, testing and commissioning the panel in a record time of seven days, restoring the power supply to the affected area.

In addition, the Delhi DISCOMs continue to repose their faith in C&S Efacec for supply of Ring Main Units for the 11kV power distribution network. In addition BRPL & BYPL placed order for supply of total 149 Nos. RMUs.



Switchboards ready for installation

C&S products are used to switch on power at India's tallest building

C&S Wintrip range of products are used to switch ON the power at India's tallest building, developed by Lodha Builders at Mumbai. In addition to its Wintrip range of products, C&S has also supplied power busbars for distribution of power. C&S also received an order from Safal Builders for their upcoming projects at Ahmedabad.



India's tallest building at Mumbai use C&S products

WiNbreak1

Single Pole MCCB

C&S with its penchant to be a complete solution provider and to add value to its customers launches "WinBreak1" single pole MCCB. These MCCBs will serve our existing customers as well as tap different customer segments like DISCOM/Utility/OEM

"WinBreak1" Single Pole MCCB provides safe and easy solution for low voltage electrical circuit protection. It is an ideal solution for general use application upto 240V AC. The high breaking capacity of these MCCBs reflect the robustness of its design and ensure high electrical and mechanical life.

"WinBreak1" complies with the latest standard line IS/IEC:60947-2, 2003. These MCCBs provide accurate and impeccable protection against overload and short circuit and its contemporary design, ergonomics, and compactness stands out from competitors offering.



Product Highlights

Range: 16A-200A

Standard Breaking Capacity: 18kA, 25kA

Trip Unit: Fixed Thermal Magnetic

Accessories: Auxiliary Contact & Pad locking

"Push to trip" facility to confirm healthiness of mechanism suitable for disconnecting function/positive isolation.

Electrical Characteristics

Type	CSE	
Frame size	125AF	
Rated Current, In [A]	16, 20, 25, 32, 40, 50, 63, 80, 100, 125, 160, 200	
Rated operational voltage, Ue AC [V]	240	
Rated impulse withstand voltage Uimp [kV]	8	
Rated insulation voltage, Ui [V]	750	
Category of utilization	A	
Type of release	Thermal Magnetic	
Thermal Release Setting	Fixed	
Terminal Capacity (cable) Sq. mm	70	
Busbar (width) mm	10	
Recommended Torque Nm	2.5	
Rated ultimate breaking capacity Icu	K	L
AC 50/60Hz 220/240V [kA]	18	25
Rated service breaking capacity Ics =% Icu	100%	100%
Mechanical life [operation]	25000	
Electrical life @ 415V [operation]	10000	
Basic dimension WXHXD [1P] (mm)	46X150X81.5	
Weight [front connection] [1P] (kg.)	0.69	

WiNmaster2

Range : 630A ~ 2500A



C&S with its strong inclination to develop, manufacture and market quality products that meet the need of customers, introduces the new series of Air Circuit Breaker "WinMaster2" in compliance with international standard IEC 60947/IS 13947-2

WinMaster2 is an incredibly innovative high quality circuit-breaker supported by state-of-the-art manufacturing technologies which ensures utmost performance, reliability, complete safety and uninterrupted service throughout the product life that ultimately reduces the stress on distribution network.

WinMaster2 ACB provides total solutions with perfect discrimination an advanced trip release for measurement, diagnosis, analysis and communication as well as protective functions for absolute protective coordination and electric power monitoring system. It is accompanied with various accessories and termination methods realizes user-friendly handling.

Trip Relays are categorized as per their usage and functions to maximize customer's satisfaction.

- **Protection:** overload, short current, ground fault, earth leakage, under voltage, over voltage, under frequency, over frequency, reverse power, unbalance etc.
- **Measurement:** voltage, ampere, power, energy, frequency, power factor, Harmonics etc.
- **Communication:** Modbus RS-485/232

Modular Wiring Accessories & Enclosures

C&S introduces its modular wiring accessories range-**Primo** & weather proof enclosures-**Combi** in retail market.

Primo

Primo is a complete range of modular wiring accessories suitable for domestic and commercial applications.



Features

- Compatible to market size boxes
- Plates with night time locator strip
- Spring loaded socket contacts for secure connections
- Hum-free fan regulators
- Wide range of modular accessories
- 25 Amps. switch socket for air-conditioners and geysers

Combi

Combi is a range of ergonomically designed weather proof enclosures for wide range of applications



Applications

- Residential outdoor bell push, kitchen, bathroom and swimming pools
- Automobile industries, ship yards, construction sites etc.
- Indoor food environment like dairies & processing units etc.
- Power supply utilities, garden applications on poles for power distribution
- Chemical plants, laboratories and many more
- Available in IP40 and IP55 versions from 1M to 12M

mPro Electronic Motor Protection Relay

Features

- Small & compact in size
- 35mm Din rail mounting
- In-built CT
- Wide (0.2A to 60A) Full load current selection
- 7 Segment display
- 2 Programmable alarm relay
- 1 Trip Relay (with fail Safe)



Protection

- Thermal overload
- Short circuit
- Under current
- Unbalance
- Phase reversal
- Locked rotor
- Earth fault (Residual / ZCT)
- Stall
- Phase loss
- CB fail

Record

- Fault record
- Accumulated motor
- Run time

Metering & Monitoring

- 3 Phase RMS current
- Earth current (Residual / ZCT)
- Thermal content (%)
- Unbalance (%)
- Load current (%)

betobar

Eta-com

Pluggable Tap-off for betobar
Low Voltage Installation System



Features

- Compact, practical and safe way to tap off up to 400A under up to 1000V AC.
- Short-circuit current up to 80 kA 1s.
- Double sets of contact members to ensure good contact.
- Quick and easy to install and remove.
- An 'open' safe to touch branch point.
- Available up to IP68 / IP69K.
- An unused branch point does not consume additional space and the ingress protection of the main line is maintained (up to IP68 / IP69K).
- The tension in the main line does not have to be interrupted to plug in or remove a branch point.
- To replace a switch, the main switch no longer has to be de-energized. The only part without current will be the part behind the switch. Possibility to foresee a spare switch in order to minimize the down time.
- Certified by LOVAG

Applications: Modular production facility, high-rise building requiring a switch per floor, tunnels, etc.

CSEPro-T170-I650:

Transformer Protection Relay
with IEC61850 Protocol

Features

- Digital signal processor based numerical design
- Modular architecture with self CT shorting
- Multifunction relay: Protection, metering, supervision, control with data acquisition & recording
- IEC-61850 protocol communication on ethernet
- Freely programmable DI/ DO
- IP54 front dust cover
- Fault / event / oscilloscope recording / multi-group settings
- CT secondary - 1 A & 5 A (site selectable)
- Rated frequency - 50/60Hz (site selectable)
- High reliability: Design as per IEC60255, IEC61000 & IEC60068 for operating in electrical harsh conditions.



Exhibitions

EP Expo 2012 - China



For the first time in its existence in the dragon country, C&S Electric participated in the EP Expo 2012, which is one of the largest electrical exhibition in China. EP Expo 2012 was held from 26th September to 29th September at Beijing, China. The exhibition is specially of interest to electrical industry where the giants from industry display their product range. In this exhibition, C&S displayed its Wintrip range of MCBs, RCCBs, Isolator & DBs. C&S Participation at EP Expo 2012 shall help to effectively raise the product awareness and to further develop the brand image of C&S Electric in China.

Water and Electricity Authority Fair - Abudhabi



C&S Electric's Bustrunking division participated in Power+Water Middle East at Abudhabi held in partnership with Abu Dhabi Water & Electricity Authority (ADWEA) from 8th to 10th October 2012. We showcased our new range of Power busbars including insulated cast resin busbars and Lighting trunking.

Light India - Delhi



C&S Electric's LWA division participated in Light India Exhibition from 5th to 8th October at Pragati Maidan, New Delhi. In this exhibition, C&S LWA division displayed its complete array of LED based innovative & energy saving lighting products. In addition, Wintrip range of MCB, RCCB, Isolator, DB, Modular switch range, weather proof Combi enclosures and energy efficient lighting trunking products were also displayed at the fair.

Intersolar - Mumbai



C&S Electric's Solar division participated in Inter Solar 2012 exhibition held at Bombay Exhibition Center, Goregaon from 6th to 8th November. Intersolar exhibition is India's largest exhibition and conference for the solar industry and the most important platform in this sector. C&S Electric showcased its EPC strength for grid tied, hybrid & rooftop solutions in solar industry.

Acetech - Mumbai



C&S Electric showcased its illumination capabilities at Acetech exhibition, held at Bombay Exhibition Center, Goregaon, Mumbai from 18th to 21st October. C&S Electric stall at this premier event drew more than 500 nos. of visitors, composed of architects, consultants, builders, contractors and customers from across the country. C&S Electric displayed its innovative energy efficient LED based luminaires, power contactor, Wintrip range of final power distribution products & lighting trunking.

C&S Electric makes forays into Kashmir valley

C&S has launched its Wintrip product range in Jammu & Kashmir retail market. The Wintrip product range was launched in an event at Srinagar which met an overwhelming response from all the retailers. C&S Products are available in retail market from Kashmir to Kanya Kumari and sold through 145 retail distributors & 2750 retail outlets across the country.



Product launch event at Kashmir valley

Launch of Wiring Accessories products

C&S Electric has added its Lighting & Wiring Accessories products to its retail effort. Initially, it has launched weather proof enclosures-Combi & Modular switches - Primo to cater growing wiring accessories market. C&S has strong retail network through Wintrip product range and the same shall be capitalised to wiring accessories products also. The newly introduced Primo range includes both command & control devices like modular switches, sockets, fan regulator, dimmer, etc. The Combi enclosures, suitable for outdoor & indoor environment, come with IP55 & IP40 protection. These enclosures with IP 55 protection can be used in outdoor & wet conditions.

Primo - Modular Switches



Combi - Enclosures & Water tight plates



Anmol Motor Starter expanding its reach



Anmol Motor Starter Road Show

Udaipur Dealer Conclave: Anmol Motor Starter was launched in Udaipur electrical market with road show involving camel cart & elephant with drummers which attracted local electrical dealers, thus creating product awareness. A dealers conclave was organized at Udaipur through local dealer Mukesh Trade Link which was attended by over 70 sub dealers of adjoining cities. Anmol motor starter presentation and Anmol motor starter promotional movie was shown to the audience, highlighting product's unique selling points which were appreciated by the participants.

Mumbai - Product Exposition at Electrical Distribution Market, Lohar Chawl: A Product Exposition at electrical distribution market, Lohar chawl was organized by Mumbai sales team. Complete range of industrial motor starters and Anmol motor starters from 1HP~100HP were displayed. All electrical dealers of Lohar Chawl were invited who visited the show. A promotional movie was also shown to participants.

Electrical Merchant Association of Lohar Chawl-Mumbai president, secretary & other office bearer of Electrical Merchant Association also visited during product show & appreciated the range offered by C&S. The promotional activity resulted in the good visibility and awareness of Anmol motor starter in the Lohar Chawl electrical market.

Nasik - Dealer Conclave: A Dealer Conclave was organized by Mumbai sales team at Hotel Seven Heaven, Nasik, in coordination with local dealer M/s Deep Enterprises. Anmol motor starter portfolio was displayed for awareness to over 100 participants who attended the programme. The event was covered by local media as well.

Chennai, Pondicherry - Anmol Sub Dealer Meet: A Dealer meet was organized at Hotel Annamalai, Pondicherry in coordination with local dealer M/s Anu Electro Control for promoting Anmol motor starter.



CSPL2012- BB Leopards win laurels at the finals - and, the trophy

This year again, CSPL battle was taken to 22 yard pitch where different divisions from C&S fought to crown CSPL tournament. CSPL 2012 season-III - the engaging 90-day cricketing saga saw 8 teams playing matches at Noida and Greater Noida stadiums. The season-III CSPL championship was organized from 7th October 2012 to 6th January 2013. This event witnessed a series of thundering performance from all the participating teams.

Total 8 nos. of team participated in the event and they were divided in two groups. 2011 CSPL champion Win Tigers along with Protection Pumas, TC Lions and Marketing Cheetahs were placed in group A. While, last year runner up-BB Leopards along with Panel Panthers, Corporate Cougars and JV Jaguars were placed in group B.

CSPL 2012 tournament started on 7th October with a ribbon cutting ceremony. The first league match of the tournament was played between Corporate Cougars and JV Jaguars. Corporate Cougars won the toss and elected to field. JV Jaguars took the advantage of sporting pitch and set a daunting run target of 143. Team Corporate Cougars could not match the opponents and therefore lost the match by a wide margin of over 29 runs.

The second match of the day was played between Win Tigers and TC Lions. The Last season champions Win Tigers defeated TC Lions very comfortably. TC Lions won the toss and chose to field first. Batting first Win Tigers scored 152 runs. In reply, TC Lions were bowled out for 120 runs and lost the match by 32 runs.

The league matches of CSPL were filled with excitement and many nail-biting moments.

With the tournament progressing, the stakes were high, and the competition tough. All the sides were raring to outdo each other and play the better game. After the league matches, two teams from each group were qualified to the semifinal.

Playing competitive cricket and showing indomitable determination to win, TC Lions and Win Tigers, defeated competition to emerge as the semifinalist from group A. While in group B, superlative performance and commendable team efforts helped BB Leopards and Panel Panthers in leaving competition behind and qualifying for semifinal.

The first encounter of the knockout stage (semifinal matches) of the season-III of CSPL was played between Win Tigers and Panel Panthers. Panel Panthers outperformed Win Tigers in the first thrilling semifinal. Win Tigers won the toss and invited Panel Panthers to bat. After a shaky start Panel Panthers were able to manage a score of 132 runs with the loss of five wickets. In reply Win Tigers could manage only 93 runs and got all out in the 18th over.

The second semifinal was played between BB Leopards and TC Lions. BB Leopards puts up a strong show to rout TC Lions. TC Lions won the toss and decided to bat first. TC Lions scored 112 runs in 20 overs after losing 8 Wickets. BB Leopards chased down the target in the 19th over and entered third time in CSPL final.

The tournament finals between group B semifinalists: Panel Panther and BB Leopards. It was a cold day, but there was no letdown in the passion to compete, as the teams played their heart out on the final day of CSPL 2012. BB Leopards after winning the Toss opted to bat first and scored 106 runs in bowler friendly conditions. Chasing a low score, Panel Panthers were bowled out for 77 runs. Team BB Leopards defeated team Panel Panthers in a praiseworthy match, dotted with impressive batting and equally threatening bowling volleys from the victors. This was the third time in a row that BB Leopards entered in final and at last it was their consistent efforts which helped them in winning CSPL Trophy.



facility update

New UL approved R&D facility at Noida



State-of-the-art UL approved laboratory at Noida Plant

C&S Electric has inaugurated its new research and development lab at Noida in its TC contactors, overload relay & motor starter plant. The new facility boasts 2400 square feet of operations space. The new R&D lab has been accredited by **UL**. The facility will serve as the R&D lab for more than 30 engineers, who are constantly working on innovative technologies.

C&S has a culture of product innovation and product performance, which is an obsession inherited from the two founders of the company, both of whom are IIT engineers. C&S products are known for their quality, performance & reliability and the fact that over 25% of our revenues are derived from products developed over the last five years is a testament of our R&D credentials. Our design and engineering teams have been successful in creating many new products which have met with great success in the market place. In recent years some of our most successful R&D efforts have resulted in launches of the MCB & DB product range, Lighting Busbar Trunking, Package Substation, new range of ACBs and LED lighting products.

The new research and development lab is launched with the aim of developing new world-class technology, products and upgrading existing ones with enhanced features and user friendliness.

New storage facility at Etacom plant, Belgium

To cater the urgent need for extra storage space, Etacom has built a large tent at the the factory's backyard. The space measuring 20X35X520m will serve as an additional warehouse. The new space shall help in minimising supply disruption to customers. The facility offers a range of short-term storage options for goods being uploaded or discharged from the factory.



Upcoming storage facility at Etacom, Belgium

New regional warehouse inaugurated at Bangalore

C&S Electric has opened the doors of its regional warehouse in Bangalore to meet the growing demand from retailers & stockists. It celebrated grand opening of Bangalore warehouse with ribbon cutting ceremony. The warehouse will serve the southern region and provide next-day delivery of C&S products to customers in the Bangalore & surroundings.

The 1700 square feet facility is located in the Sampangiram Nagar-Bangalore, close to our regional office. This new facility will also enable us to serve our customers better, particularly the retail sector. This will help us in improving efficiency and drive down supply chain costs. The new facility is our fourth warehouse after national warehouse at Noida and regional warehouses at Ahmedabad and Bhubaneswar.



Mr. Khanna inaugurating Bangalore warehouse

Mr. Khanna addressing the team

Corporate Social Responsibility

Corporate Social Responsibility (CSR)

Vastradan Diwas

In continuation to its first project of Vastardan, C&S Electric organised project Vastradan once again to help the under privileged. The event was organised on 3rd December 2012 in association with NGO Vastradan. VASTRA-DAN, is a unique resource mobilization initiative to provide clothes to millions of less fortunate people by turning one's wastage into a resource for another. The effort goes beyond the realm of 'charity' and plays a crucial role in the development process.

The project was very successful as we collected more than 2400 clothes donated by C&S family.



Paper Recycling

As part of our waste paper recycling initiative across C&S group, we have contributed more than 3600 kg of waste paper in last six months to Jagruti, NGO. Jagruti, in turn has provided us notepads made of recycled paper which are being used across the company. We also procured A-4 size reams from Jagruti made completely from recycled paper which are also being used within the organization. As part of company's contribution, this initiative of recycling of waste paper weighing 3.6 ton has contributed in saving approximately:

- 61 trees,**
- 94,612 liters of water**
- 14,677 KW hours of energy**
- 297.43 cubic feet of landfill space**



Blood Donation camp

BLOOD DONATION CAMP
RS INDIA
IN COLLABORATION WITH ROTARY CLUB - GHAZIABAD
29TH OCTOBER 2012

Donating blood is one of the most important, selfless, and humanitarian acts that a human can perform and it doesn't cost a penny. The present estimated blood need of India is 80 lakh (8 million) units. That calculates to someone in this country - a cancer patient, a trauma patient - needing blood every two seconds.

Assuming this social responsibility, RS Components & Controls also contributed to this noble cause. On 29th October 2012, RS Components & Controls (India) Ltd. organised a blood donation camp in collaboration with Rotary club-Ghaziabad, and contributed 37 units of blood, which can save almost 111 lives. Each of the donated blood units gets converted into three life saving components of blood and get consumed separately by three type of patients.

C&S Electric supports the social cause

Everybody does his/her social responsibility in some or the other way, but the zeal with which Mr. Manjit Singh does his, is rarely seen. Mr. Manjit Singh, a dedicated employee of C&S is working for a cause which is not known to many. He endeavors to spread awareness about mucopolysaccharidosis (MPS II-Hunter's Syndrome), a rare genetic disorder of lysosomal storage disorders (LSDs).

MPS II caused by lack of an enzyme due to gene mutations. Children suffering from MPS II don't have enzyme in their body to break complex sugar chain which leads to accumulation of waste material in body cells, damaging all the major organs of the patient including heart, spleen, liver and bones.

Unlike for other complex diseases, MPS II is an illness for which very less is being done in India. Patients suffering from LSDs & MPS II don't get any support or medicine from Governments. Mr. Manjit Singh is doing his best to spread awareness to avoid recurrence of LSDs and ultimately change the scenario. He conducts conferences, organises camps in hospitals all over India so as to comfort the people suffering from LSDs including MPS II. C&S Electric recognizes his selfless endeavors for this benevolent cause. For more details please visit www.lsdss.org

Environment Day

C&S celebrated environment day on 5th June at its offices & works sites. World environment day is commemorated every year on June 5 to promote awareness on the importance of preserving our biodiversity. It also aims to identify issues related to environment and ways to take corrective actions.

On the world environment day all the employees of C&S pledged to give back to mother nature by the way of tree plantation, saving paper, reducing power consumption, saving water, etc.



Tree plantation ceremony at C&S EPC sites



ISO:14001 & OHSAS: 18001 certification for EPC Division for its Safety, Health & Environment initiatives

The EPC division of C&S Electric Ltd, which started its functioning in the year 2002, has spread its wings across various segments: Govt. sector, defence, infrastructure sector, thermal power plants, hydro electric power plants, steel, oil & gas, mines and other industries.

C&S EPC division, is committed towards the safety, health & better environment for all its stakeholders and at all its project sites. The main motto of EPC Division is to ensure "well being of all of everyone". To achieve this target, EPC division in the year 2011 embarked upon an ambitious initiative to implement safety, health and environment standards in its office and at all its project sites to get its safety, health and environment (SHE) operations certified to an internationally accepted standard. An action plan was laid down for such purpose, safety policy of the division was formulated, announced and circulated to all its employees, sites and offices. A SHE manual was prepared and safety working procedures were written down and widely circulated to all sites. For large project sites dedicated safety officers were deployed whereas in all other locations, engineers were trained on SHE matters. All the employees were given SHE awareness training. Internal audits by trained auditors were conducted for all the sites.

Finally TUV, a German quality and safety audit organization was employed to do the final assessment and certification. TUV conducted stage-I and stage-II audit of our office and also audited our site & at Leepkata, Assam. After satisfactory and successful auditing of the SHE systems, EPC division is awarded with the ISO:14001 & OSHAS:18001 certification by TUV on 30th November 2012.



Managing Director of C&S Electric Ltd., Shri Ashok Khanna receiving the ISO & OHSAS certificate from TUV



Mr. Rahul Sood, receiving award for Best Quality Product

C&S Himoinsa wins product quality award

C&S Himoinsa is honored to receive product quality award from Ashok Leyland. The award recognizes CSH efforts for creating the world class quality products in a crowded market. This product quality award recognises, C&S Himoinsa as one of the best supplier of diesel gensets in India. The award specifically refers to the product quality, production processes and the in-sequence delivery of gensets to the market.

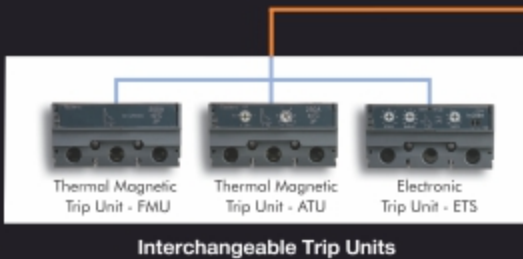
Quality product is one of the prime factors that define success in the diesel genset market. CSH abides by the strictest norms, right from choosing input material to final consistent delivery of best generators.

The CSH product range includes generators from 7.5kVA to 2000kVA. The CSH generators are manufactured as per international standards & meeting CPCB norms laid by the Indian government. The generators are made at the futuristic plant spread over 10000 sqm in Pantnagar, Uttarakhand.

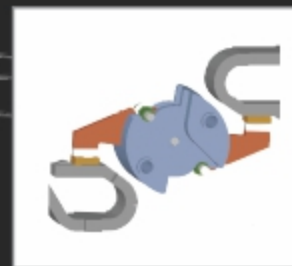
This is the third time in a row that CSH has received Product Quality award from Ashok Leyland. The award ceremony was held at Chennai on 6th & 7th November. The award was handed over by Mr. Charu Balsare, ED PSB-Ashok Leyland during Laymeet 2012, an event attended by hundreds of leading genset dealers. The Ashok Leyland Award for quality is evidence of performance and delivery of high quality diesel generators by C&S Himoinsa.

WiNbreak2 Double Break MCCB

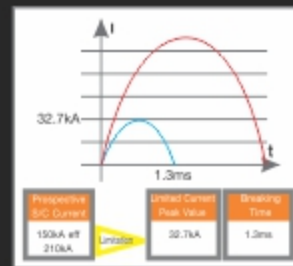
innovative intelligent
integrated intuitive



- 16A ~ 1600A, 3P & 4P with Common Accesories
- Ics = 100% Icu: upto 150 kA
- Fastest Tripping
- Communication interface: RS 485 (Modbus)
- ZSI



Double Contact Structure



Current Limiting



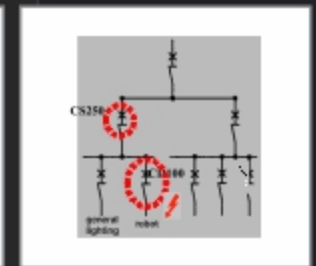
PASQ Technology



Communication Compatible



Tripping by Pressure



Total Protection:
Cascading & Discrimination

C&S Electric Limited

Corporate Office: 222, Okhla Industrial Estate, Phase-III, New Delhi-110020, INDIA

Tel: +91-11-3088 7520 - 29 Fax: +91-11-26847154, 26829063 E-mail: info@cselectric.co.in Website: www.cselectric.co.in

We touch your electricity everyday!